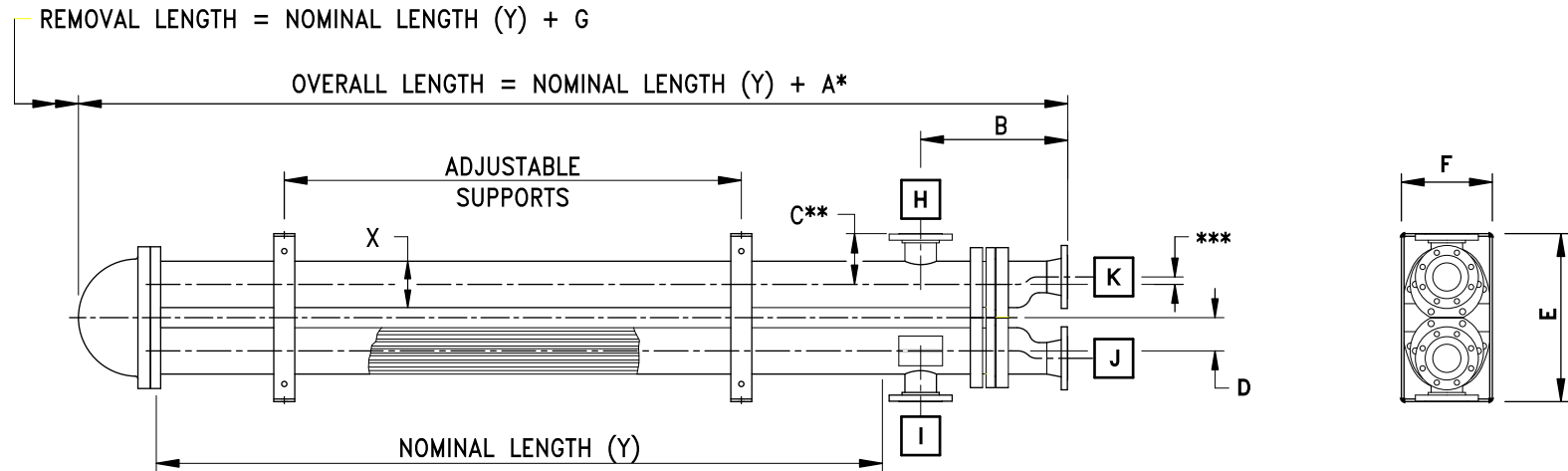


THE HDMT CLOSURE OFFERS SEPARATE SEALING SURFACES WITH COMMON BOLTING



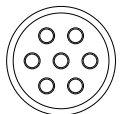
* Dimension based on largest 150# RFWN tube connection

** Dimension based on largest 150# RFWN shell connection

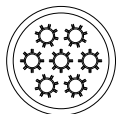
*** This dimension is variable based on tube connection size (J & K)

SHELL SIZE	A *	B *	C **	D	E	F	G	SHELL CONNECTION	TUBE CONNECTION
								H & I	J & K
2	24.00"	13.00"	5.00"	2.63"	13.50"	8.00"	10.00"	up to 2"	up to 2"
3	26.00"	15.00"	5.50"	2.63"	13.50"	8.00"	12.00"	up to 3"	up to 3"
4	30.00"	16.00"	6.00"	3.00"	16.00"	10.00"	12.00"	up to 4"	up to 4"
5	36.00"	20.00"	7.25"	4.75"	24.00"	13.00"	14.00"	up to 5"	up to 5"
6	36.00"	20.00"	7.25"	4.75"	24.00"	13.00"	16.00"	up to 6"	up to 6"
8	40.00"	22.00"	9.00"	6.00"	30.00"	18.00"	18.00"	up to 8"	up to 8"
10	48.00"	26.00"	12.00"	7.00"	34.50"	20.50"	20.00"	up to 10"	up to 10"
12	54.00"	30.00"	14.00"	8.00"	40.00"	22.50"	24.00"	up to 12"	up to 12"
14	60.00"	34.00"	15.00"	9.50"	45.00"	26.00"	24.00"	up to 14"	up to 14"
16	66.00"	38.00"	16.00"	10.50"	54.00"	28.00"	30.00"	up to 16"	up to 16"

MULTI-TUBE



BARE TUBE



FIN TUBE

DIMENSIONS ARE APPROXIMATE AND FOR PRELIMINARY USE ONLY, NOT FOR FINAL LAYOUT.

HDMT MODEL DESCRIPTION:

X - Y - HDMT

X = NOMINAL SHELL SIZE

Y = NOMINAL LENGTH

HDMT = HEAVY DUTY MULTI-TUBE CLOSURE

SPECIFICATIONS:

ALCO PRODUCTS

Division of Nitram Energy, Inc.
 401 US HIGHWAY 281, WICHITA FALLS, TEXAS
 PHONE: (940) 723-6366 FAX: (940) 723-9448

ALCOTWIN HAIRPIN HEAT EXCHANGER
 MODEL: