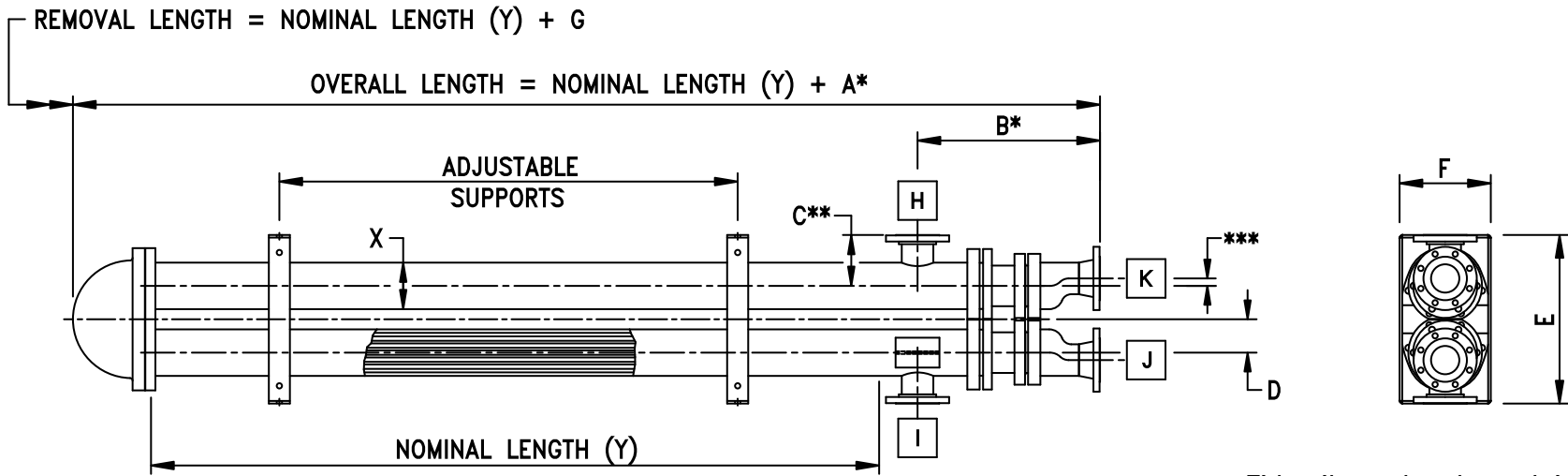


THE SSMT CLOSURE IS A TRUE SEPARATED HEAD DESIGN FEATURING SEPARATE SEALING SURFACES WITH SEPARATE BOLTING



* Dimension based on largest 150# RFWN tube connection

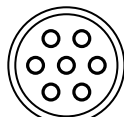
** Dimension based on largest 150# RFWN shell connection

*** This dimension is variable based on tube connection size (J & K)

SHELL SIZE	A *	B *	C **	D	E	F	G	*** This dimension is variable based on tube connection size (J & K)	
								SHELL CONNECTION H & I	TUBE CONNECTION J & K
2	28.00"	18.00"	5.00"	2.63"	13.50"	8.00"	16.00"	up to 2"	up to 1"
3	30.00"	20.00"	5.50"	2.63"	13.50"	8.00"	17.50"	up to 3"	up to 1 1/2"
4	32.00"	20.00"	6.00"	3.00"	16.00"	10.00"	18.00"	up to 4"	up to 3"
5	38.00"	24.00"	7.25"	4.75"	24.00"	13.00"	20.00"	up to 5"	up to 4"
6	38.00"	24.00"	7.25"	4.75"	24.00"	13.00"	20.00"	up to 6"	up to 4"
8	47.00"	27.00"	9.00"	6.00"	30.00"	18.00"	24.00"	up to 8"	up to 6"
10	48.00"	28.00"	12.00"	7.00"	34.50"	20.50"	28.00"	up to 10"	up to 8"
12	52.00"	32.00"	14.00"	9.00"	40.00"	22.50"	32.00"	up to 12"	up to 10"
14	56.00"	34.00"	15.00"	9.50"	45.00"	26.00"	36.00"	up to 14"	up to 12"
16	60.00"	36.00"	16.00"	10.50"	54.00"	28.00"	40.00"	up to 16"	up to 12"

MULTI-TUBE

DIMENSIONS ARE APPROXIMATE AND FOR PRELIMINARY USE ONLY, NOT FOR FINAL LAYOUT.



BARE TUBE



FIN TUBE

SSMT MODEL DESCRIPTION:

X - Y - SSMT

X = NOMINAL SHELL SIZE

Y = NOMINAL LENGTH

SSMT = SEVERE SERVICE SEPARATED HEAD MULTI-TUBE CLOSURE

ALCO PRODUCTS

Division of Nitram Energy, Inc.

401 US HIGHWAY 281, WICHITA FALLS, TEXAS

PHONE: (940) 723-6366

FAX: (940) 723-9448

ALCOTWIN HAIRPIN HEAT EXCHANGER MODEL:

SPECIFICATIONS: